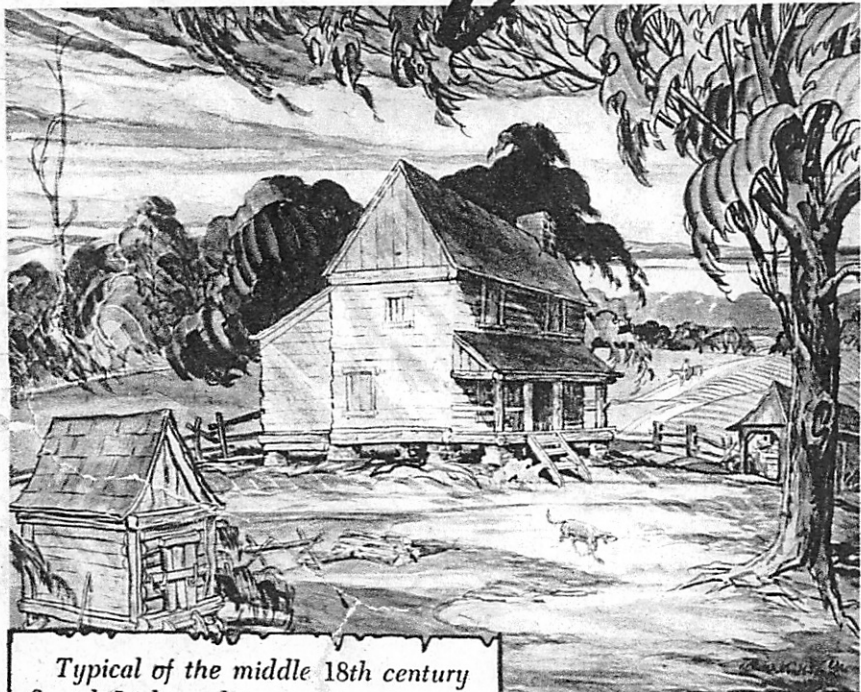


Fairfield Sketches

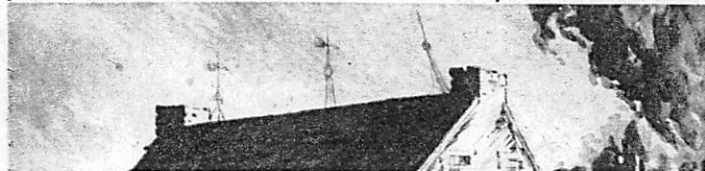
Historical, pictorial and economic aspects of Winnsboro provide inspiration for the sketches on these pages by Artist Russell Henderson of Columbia.



Typical of the middle 18th century Scotch-Irish architecture is the Elliott homestead erected in 1769 and standing to the northwest of Winnsboro. The painting is in the collection of one branch of the sturdy old pioneer's descendents, the T. K. McDonalds.



Fairfield county's court house was designed by Robert Mills and built in 1823. It was constructed of Eng-





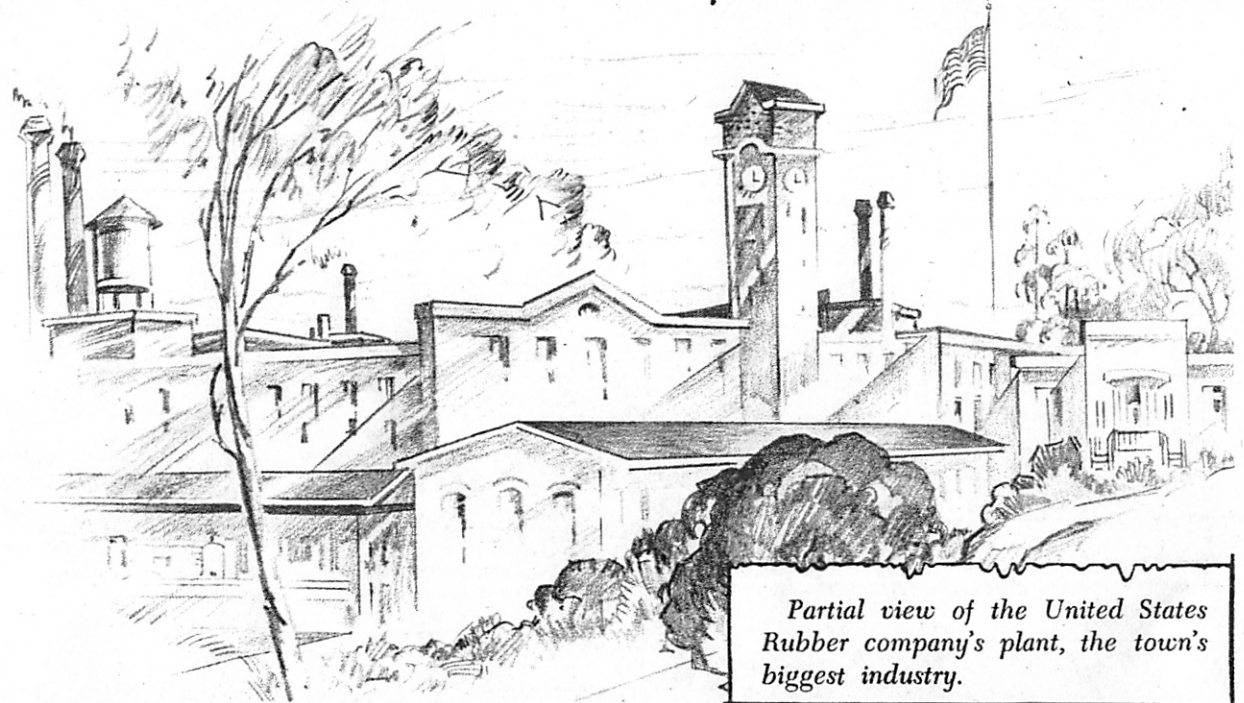
Typical of the middle 18th century Scotch-Irish architecture is the Elliott homestead erected in 1769 and standing to the northwest of Winnsboro. The painting is in the collection of one branch of the sturdy old pioneer's descendents, the T. K. McDonalds.



"Fairview" was built of slave-made hand brick immediately after the Revolutionary War. It stands on one of Fairfield's highest hills overlooking the Broad river valley. Note the spreading eagle encrusted above the doorway placed there by the staunch old patriot, Gen. Thomas Means, who erected this magnificent old manor house, and who is buried within its shadows. It is now known as the Frazier home, being owned by the J. B. Fraziers, III. It is unoccupied.



Fairfield county's court house was designed by Robert Mills and built in 1823. It was constructed of English ballast brick and now stands as an excellent example of the architect's genius.



Partial view of the United States Rubber company's plant, the town's biggest industry.